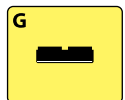
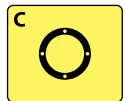
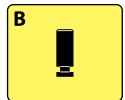
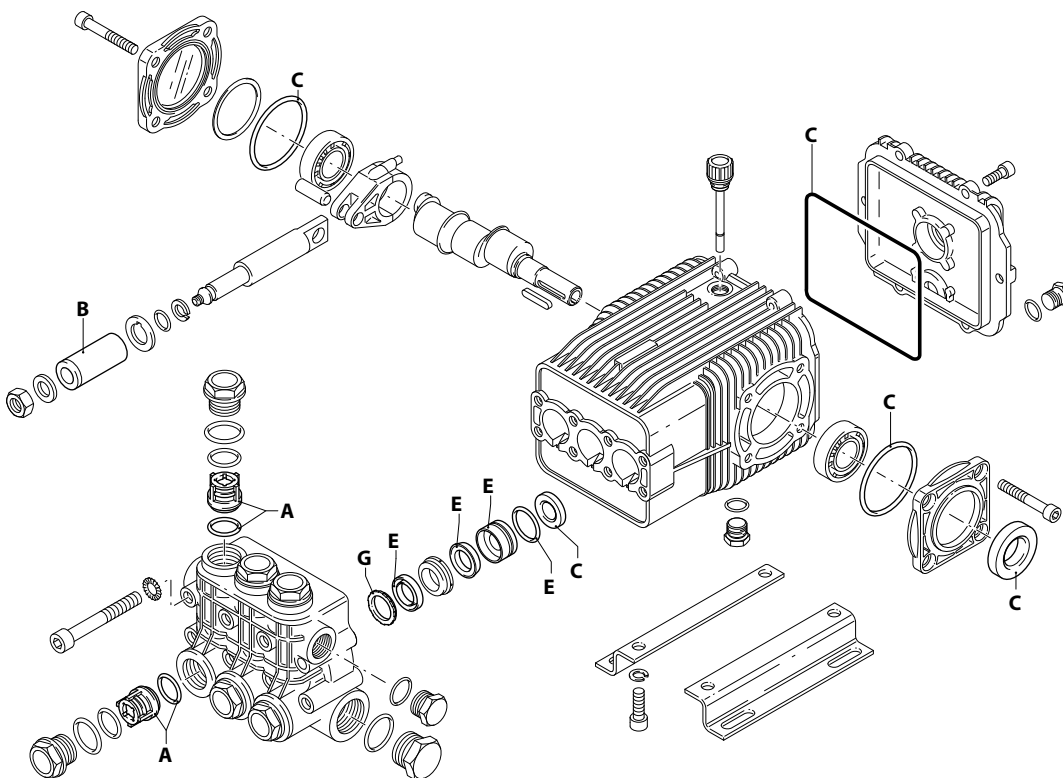


UN003510-FU

PART KITS / 配套零件



UN003511-FU

194 Series

WHW 1450 rpm N version ø 24 mm

15.20 21.15 26.15 32.20



Pos. 序号	Cod. 编号	Description	描述	Qt 数量	Note 备注	Pos. 序号	Cod. 编号	Description	描述	Qt 数量	Note 备注
1	1941360	Screw	TCEI M10x80	8	C=42Nm	37	1940410	O-ring	Ø 132x3	1	
2	650530	Washer		8		38	1200430	Screw	TCEI M6x16	6	C=10Nm
3	1941790	Plug		6	C=68Nm	39	2529012	Cover		1	
4	1940150	Ring	antiestrusione	6		40	1780690	Plate		1	⊕
5	1140450	O-ring	Ø 20,24x2,62	12		41	1140450	O-ring	Ø 20,24x2,62	1	⊕
6	1949054	Complete valve		6		42	820680	Ring	tenuta	1	(a)
7	1941780	Head		1		43	1940560	Ring	tenuta	3	
8	550350	O-ring	Ø 23,81x2,62	1		44	1940370	Foot		2	Optional
9	1140480	Plug		1	C=35Nm	45	1940380	Screw	TCEI 10x18	4	Optional C=53Nm
10	1981180	Plug	3/8" G nickel	2	⊕ C=25Nm	46	200231	Washer		4	Optional
11	740290	O-ring	Ø 14x1,78	3	⊕	47	2520320	Support	cuscinetto aperto	1	
12	2340180	Ring		3		60	1949229	Head assembly		1	
13	1942810	Piston guide	anteriore Ø22	3		75	1941270	Level gauge		1	Ⓞ
14	1942730	Gasket		3	⊗	76	100410	O-ring	Ø 34,6x2,62	1	Ⓞ
15	1942940	Piston guide	posteriore Ø22	3		77	1941260	Plate		1	Ⓞ
16	820490	O-ring	Ø 34,65x1,78	3		78	1941290	Ring		1	Ⓞ
17	1940570	Nut		3	⊕ C=12Nm	79	1942860			3	⊗
18	1940580	Washer		3		80	1980740	Plug	3/8" G ottone	2	C=20Nm
19	1420120	Piston	Ø 22	3							
20	880840	O-ring	Ø 9,25x1,78	3							
21	960460	Plate		3							
22	1940120	Ring	antiestrusione	3							
23	1940070	Piston	di guida	3							
24	1940060	Hub pin		3							
25	1941380	O-ring	Ø 66,34x2,62	2							
26	1941390	Shim	0.05 mm	1÷3							
	1941400	Shim	0.10 mm	1÷3							
	1941410	Shim	0.19 mm	1÷3							
	1941420	Shim	0.25 mm	1÷3							
27	2529011	Cover		1							
28	850370	Screw	TCEI M8x16	8	C=24,5Nm						
29	1140410	Bearing		2							
30	1940051	Connecting-rod		3	⊕ C=20Nm						
31	1940530	Shaft	marcato 6	1	●						
	1940190	Shaft	marcato 4	1	○						
	1940180	Shaft	marcato 3	1	▲						
	1940160	Shaft	marcato 1	1	■						
32	650250	Key		1							
33	2520330	Pump body		1							
34	1140370	Plug		1							
35	1260250	Level gauge		1	⊕						
36	1260430	Ring		1	⊕						

⊕ Part of part n° 2349012 / 配件号是2349012

Ⓞ Part of part n° 2529011 / 配件号是2529011

PART KITS - 配套零件

A=KIT 42401 valves 单向阀		B=KIT 1891 pistons 柱塞		C=KIT 2873 oil seals 油封		E=KIT 42402 water seals 水封	
Pos. 序号	Q.ty 数量	Pos. 序号	Q.ty 数量	Pos. 序号	Q.ty 数量	Pos. 序号	Q.ty 数量
5	6	19	3	25	2	14	3
6	6			37	1	15	3
				42	1	16	3
				43	3	79	3

G=KIT 42403 support rings 支撑环							
Pos. 序号	Q.ty 数量	Pos. 序号	Q.ty 数量	Pos. 序号	Q.ty 数量	Pos. 序号	Q.ty 数量
12	3						

SIMBOLOGIA - 标记

● For / 用于 WHW 15.20 ○ For / 用于 WHW 21.15 ▲ For / 用于 WHW 26.15 ■ For / 用于 WHW 32.20

- C Tightening torque tolerance 0÷10% / 拧紧力矩公差 0÷10%
- ⊕ Screw with Loxeal 55-14 / 用 Loxeal 55-14 螺丝
- ⊗ Lubricate with grease Molykote PG54 on the INNER diameter only / 仅在口径内侧用 Molykote PG54 润滑
- (a) Fit the seal with tool code nr. 1941990 / 使用工具 nr. 1941990进行密封

Oil - 机油	
Type / 类型	Quantity / 数量
ISO VG 220	0,92 Kg